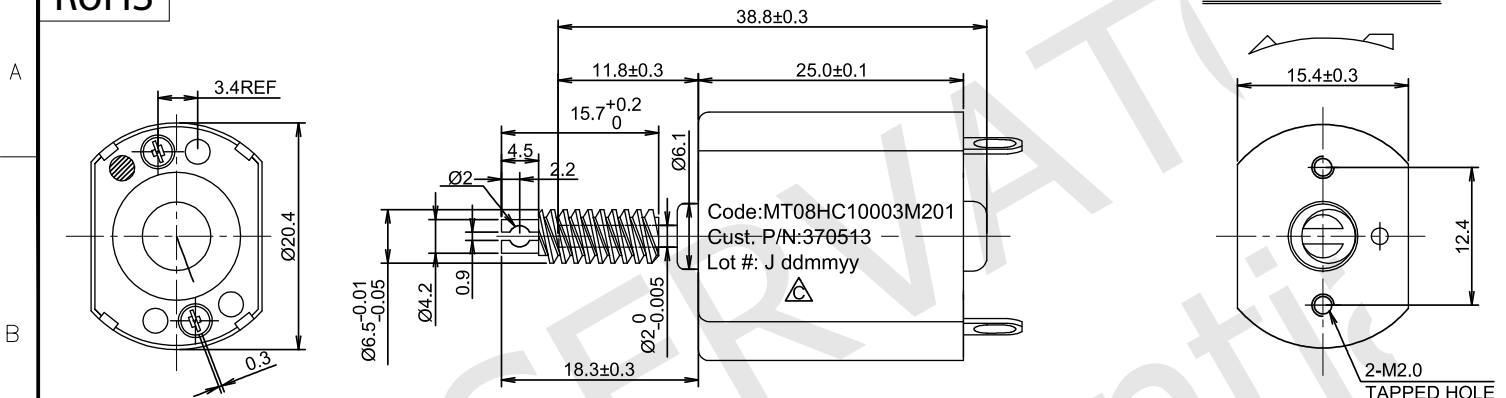


RoHS

DIRECTION OF ROTATION



Performance (in an ambient temperature of 25-30 °C)
Motor tested rapidly to prevent significant temperature rise.

At a constant voltage of : 4.80 Volts
Direction : CCW

At No Load
Speed : 7700 rpm
Current : 0.070 Amps

At stall (Extrapolated)
Torque : 77.0 g.cm
Current : 1.148 Amps

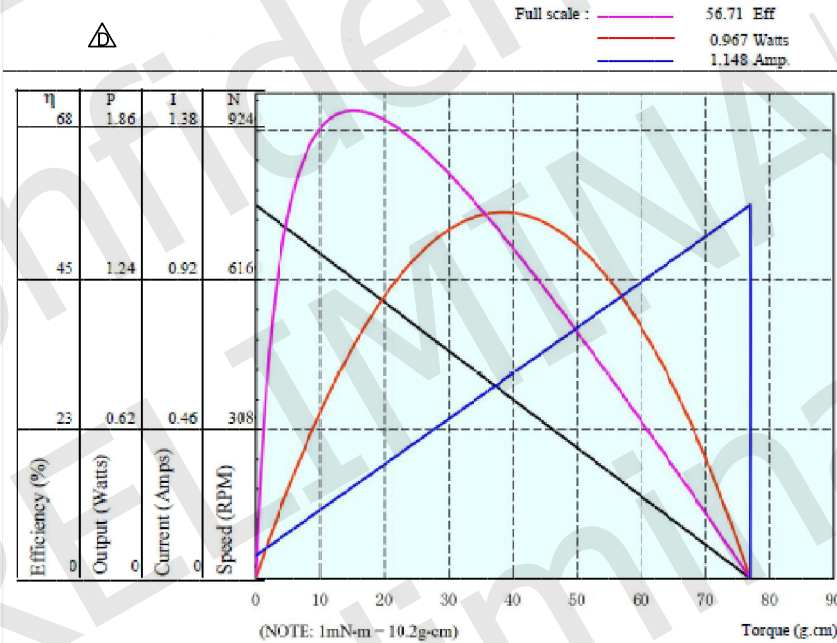
At maximum efficiency
Efficiency : 56.71 %
Torque : 15.25 g.cm
Speed : 6175 rpm
Current : 0.283 Amps
Output : 0.967 Watts

At maximum Power output
Output : 1.552 Watts
Torque : 38.5 g.cm
Speed : 3850 rpm
Current : 0.61 Amps

Characteristics
Torque constant : 71.429 g.cm/Amp
E.M.F. constant : 71.429 mV/rad/sec
Dynamic resistance : 4.1812 Ohms
Motor regulation : 100.00 rpm/g.cm

MOTOR SPECIFICATIONS

RATED VOLTAGE	4.8 V DC
OPERATING VOLTAGE RANGE	3.0-6.0 V DC
STARTING VOLTAGE	2.0V DC
NO LOAD CURRENT	0.10 A MAX
RATED LOAD CURRENT	0.26 A MAX
RATED POWER	
RATED TORQUE	
PEAK TORQUE	
RATED LOAD SPEED	6700±15% RPM
NOLOAD SPEED	7700±15% RPM
INSULATION CLASS	
IP CODE	
DIELECTRIC STRENGTH	
INSULATION RESISTANCE	1 Mohm min AT 100V DC
LINE TO LINE RESISTANCE	
LINE TO LINE INDUCTANCE	
ROTOR INERTIA	
BACK EMF	
OPERATING TEMPERATURE	
STORAGE TEMPERATURE	-20°C----+60°C
WEIGHT	30 g
RATED LOAD	10 G.CM
SHAFT END PLAY	0.05-0.5mm



UNIT: mm	DESIGN	Stm01933-00d
UNLESS OTHERWISE SPECIFIED TOLERANCES	CHECK	
DIMENSIONS : ±0.3 mm DEGREES : ±5%	APPROVED	
ORTHOGRAPHIC PROJECTION	DATE	05 / 01 / 2022

LABELS (None)

MT08HC10003M201
DC BRUSHED MOTOR SPECIFICATION



REV	00a - First release.
	00b - Modified as samples.
	00c - Printed the label directly on motor.
	00d - Fixed the graph image.