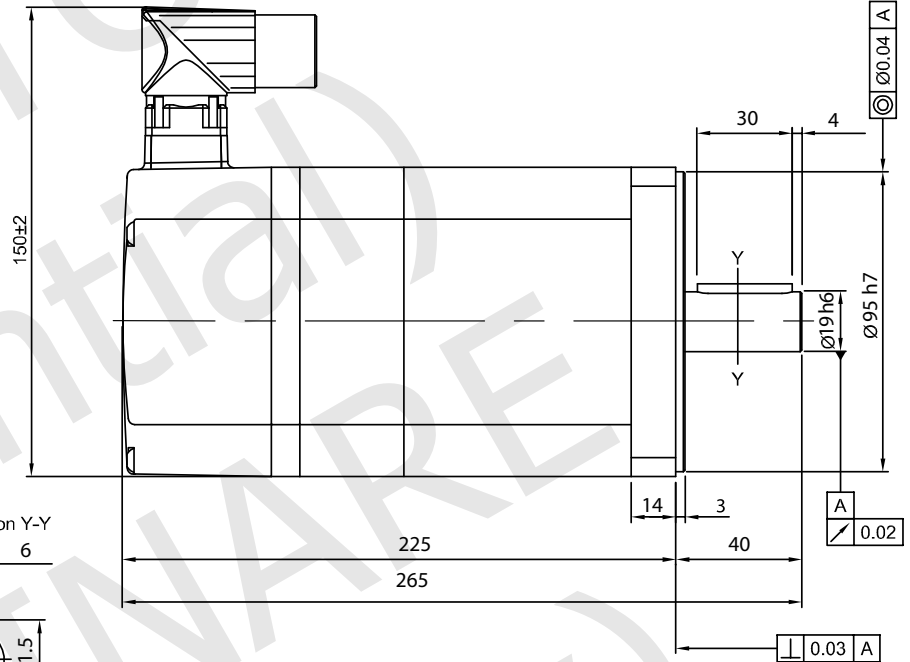
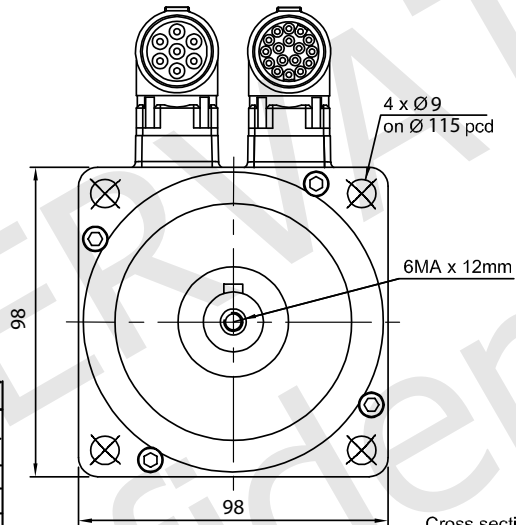
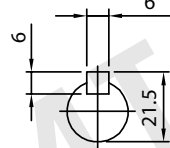


RoHS



Cross section Y-Y



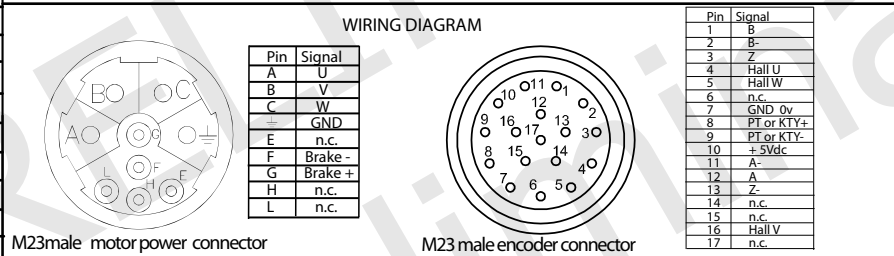
BRAKE SPECIFICATIONS	
RATED VOLTAGE	24 Vdc
RATED CURRENT	0.75 A
HOLDING TORQUE	9.00 Nm
MAX SPEED	10000 rpm
MOMENT OF INERTIA	0.54 Kg.m ² *10 ⁻⁴

ENCODER SPECIFICATIONS	
ENCODER TYPE	Incremental quadrature
RESOLUTION	2048 ppr
ROTOR MOMENT OF INERTIA	0.01 Kg.m ² *10 ⁻⁴
POWER SUPPLY	5 Vdc
OUTPUT	Line driver

MOTOR SPECIFICATIONS	
POLE PAIRS	5
APPLIED VOLTAGE	230 Vac
RATED POWER	1050 W
STALL TORQUE	4.00 Nm
STALL CURRENT	5.10 A

RATED TORQUE	3.50 Nm
RATED CURRENT	4.50 Arms
PEAK TORQUE	12.00 Nm
PEAK CURRENT	16.3 Arms
RATED SPEED	3000 rpm
MAX SPEED	4000 rpm

TORQUE CONSTANT	0.82 Nm/Arms ±5%
VOLTAGE CONSTANT	50.00 Vrms/Krpm ±5%
LINE TO LINE RESISTANCE	1.40 ohm ±5%
LINE TO LINE INDUCTANCE	13.5 mH
ROTOR INERTIA	2.7 Kg.m ² *10 ⁻⁴
AMBIENT TEMPERATURE	+0°C ~ +40°C
WEIGHT	5.46 Kg.
PROTECTION	IP65
INSULATION CLASS	Class F, 155°
MAX RADIAL LOAD	600 N
MAX AXIAL LOAD	150 N



LABELS

CODE **BA39SA1052E1B0F**

U _N	230 Vac	n	3000 r/min
Ke	50.0 V/Krpm	DUTY	S1
I _N	4.5 A	InC	F
M _N	3.5 Nm	IP code	65
M _{stat}	4.0 Nm	S.N.	yyyyyyy
P _N	1050 W	DATE	xx/xx/xxxx

UNIT: mm	DESIGN	Stm02179-02a
UNLESS OTHERWISE SPECIFIED TOLERANCES	CHECK	
DIMENSIONS : ±0.3 mm DEGREES : ±5%	APPROVED	
DRAWING NOT TO SCALE	DATE	05 / 12 / 2022

BA39SA1052E1B0F
AC BRUSHLESS MOTOR SPECIFICATION

REV	Description
00a / 01a	First release.
02a	Fix the encoder A and A- polarity.

Ever
ELETRONICA
the clever drive
www.everelettronica.it