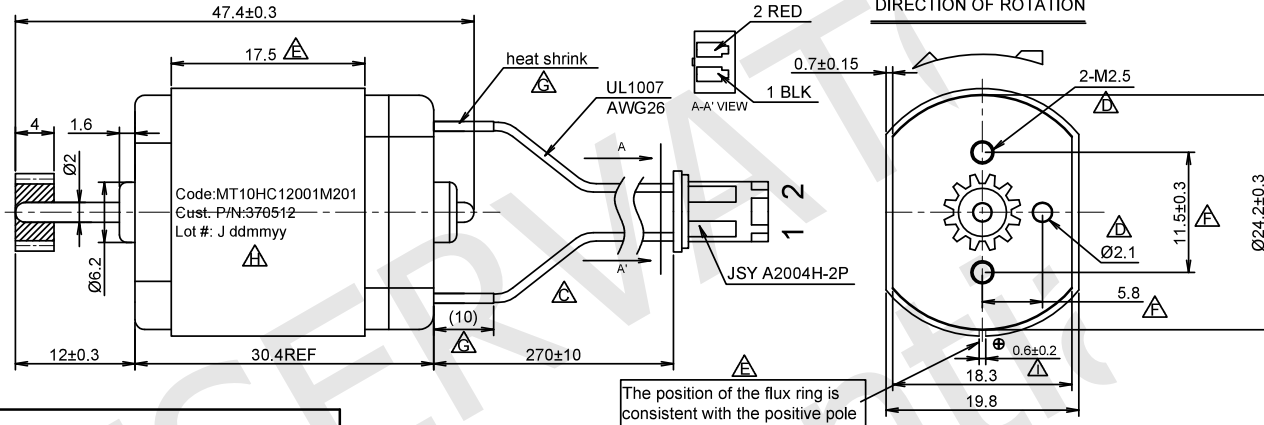
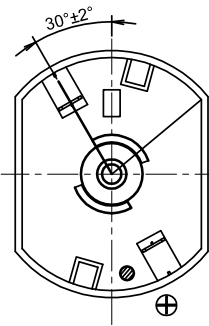


RoHS



Performance (in an ambient temperature of 25-30 ° C)  
Motor tested rapidly to prevent significant temperature rise.

At a constant voltage of : 18.00 Volts  
Direction : CCW

At No Load  
Speed : 4700 rpm  
Current : 0.020 Amps

At stall (Extrapolated)  
Torque : 109.7 g.cm  
Current : 0.229 Amps

At maximum efficiency  
Efficiency : 49.62 %  
Torque : 25.02 g.cm  
Speed : 3628 rpm  
Current : 0.068 Amps  
Output : 0.932 Watts

At maximum Power output  
Output : 1.349 Watts  
Torque : 54.8 g.cm  
Speed : 2350 rpm  
Current : 0.12 Amps

Characteristics  
Torque constant : 525.000 g.cm/Amp  
E.M.F. constant : 525.000 mV/rad/sec  
Dynamic resistance : 78.6408 Ohms  
Motor regulation : 42.86 rpm/g.cm

**PINION SPECIFICATIONS**

NUMBER OF TEETH	12
MODULE	0.5

**MOTOR SPECIFICATIONS**

RATED VOLTAGE	18 V DC
OPERATING VOLTAGE RANGE	16~20 V DC
STARTING VOLTAGE	6.0V DC
NO LOAD CURRENT	0.03 A MAX
RATED LOAD CURRENT	0.1 A MAX
RATED POWER	
RATED TORQUE	
PEAK TORQUE	
RATED LOAD SPEED	3800±15% RPM
NOLOAD SPEED	4700±15% RPM

INSULATION CLASS	
IP CODE	
DIELECTRIC STRENGTH	
INSULATION RESISTANCE	1 Mohm min AT 100V DC
LINE TO LINE RESISTANCE	

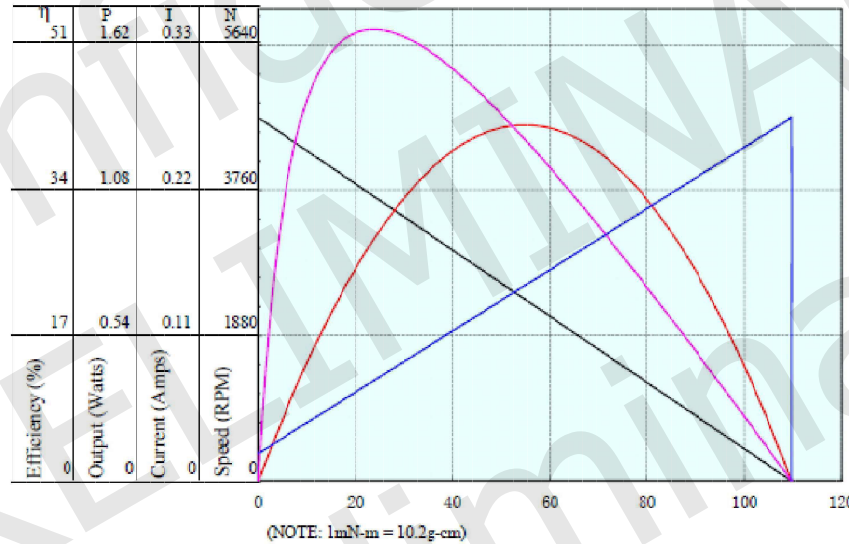
LINE TO LINE INDUCTANCE	
ROTOR INERTIA	
BACK EMF	

OPERATING TEMPERATURE	
STORAGE TEMPERATURE	-20°C----+60°C

WEIGHT	40 g
RATED LOAD	21 G.CM
SHAFT END PLAY	0.05~0.5mm



Full scale : 52.51 Eff  
0.896 Watts  
0.277 Amp.



UNIT: mm  
UNLESS OTHERWISE SPECIFIED TOLERANCES  
DIMENSIONS : ±0.3 mm DEGREES : ±5%  
ORTHOGRAPHIC PROJECTION

DESIGN	Stm01932-00j
CHECK	
APPROVED	
DATE	05 / 01 / 2022

REV

- 00a - First release.
- 00b - Modified as samples.
- 00c - Added the leadwires.
- 00d - Add the indication of the holes diameters in front flange.
- 00e - Indicated the position of the flux ring.
- 00f - Add dimensions on front flange.
- 00g / 00h - Add the length of the heat shrink and printed the label directly on motor
- 00i / 00j - Modify the flow ring and fixed the graph image.

LABELS (None)

**MT10HC12001M201**  
DC BRUSHED MOTOR SPECIFICATION



www.everelectronica.it