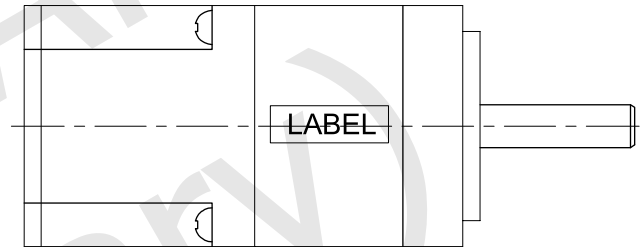
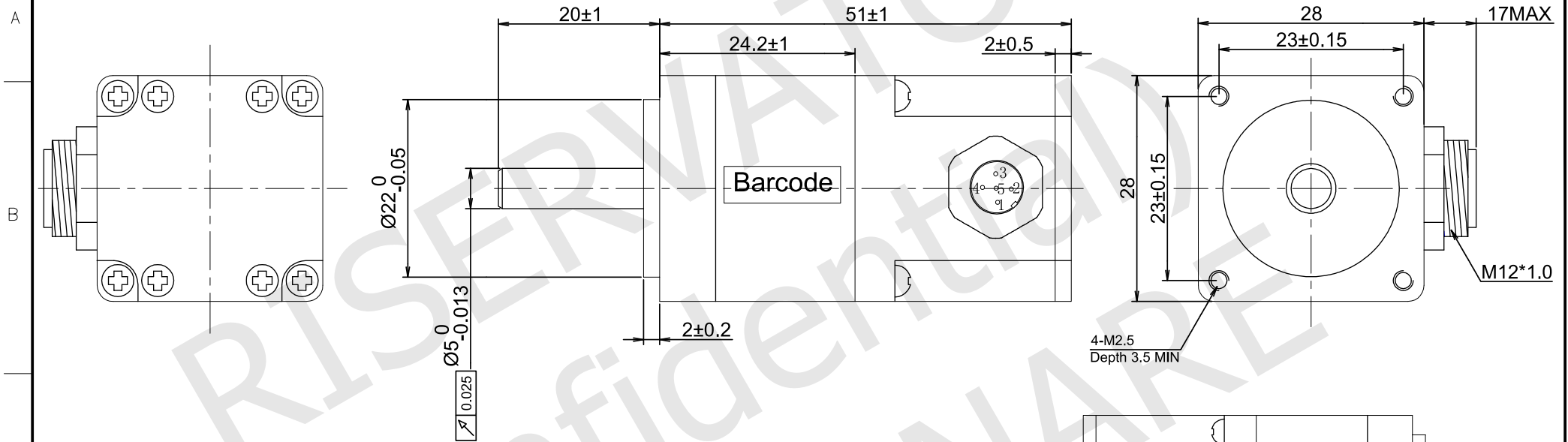


RoHS



MOTOR SPECIFICATIONS

STEP ANGLE	1.8° ±5%
RATED CURRENT	0.67 Amps/Ph
HOLDING TORQUE	0.071 Nm Min.
RESISTANCE	5.60 ohm ±10% at 25°C
INDUCTANCE	4.00 mH ±20% at 1kHz, 1Vrms
ROTOR INERTIA	9 g.cm ²
INSULATION CLASS	Class B, 130°C
DIELECTRIC STRENGTH	500 Vac 1 minute
IP CODE	IP65
PULL OUT TORQUE	---
BACK EMF	---
DETENT TORQUE	---
WEIGHT	130 g. approx
TEMPERATURE RISE	80K Max.
OPERATING TEMPERATURE	-20°C ~ +50°C
STORAGE TEMPERATURE	-20°C ~ +70°C
SHAFT AXIAL LOAD	10 N
SHAFT RADIAL LOAD	21 N (ON THE SHAFT END)

WIRING DIAGRAM

MOTOR	
1	A/
2	A
3	B
4	B/
5	---

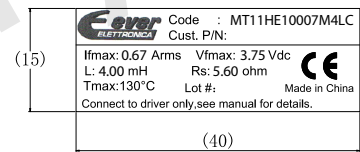
EXCITING SEQUENCE(TWO PHASES) VS.DIRECTION OF ROTATION

STEP	A	B	\bar{A}	\bar{B}
1	+	+	-	-
2	-	+	+	-
3	-	-	+	+
4	+	-	-	+

CW ← CCW

CLOCK WISE VIEW FROM MOUNTING SIDE

LABELS



YYWWXXXXX (25 x 8)

Stator barcode label

UNIT: mm
UNLESS OTHERWISE SPECIFIED TOLERANCES
DIMENSIONS : ±0.3 mm DEGREES : ±5%

DESIGN	Stm01982-00b
CHECK	
APPROVED	
DATE	03 / 06 / 2020

MT11HE10007M4LC
STEPPING MOTOR SPECIFICATION

REV

- 00a - First release.
- 00b - Changed the label type and position.



www.everelettronica.it