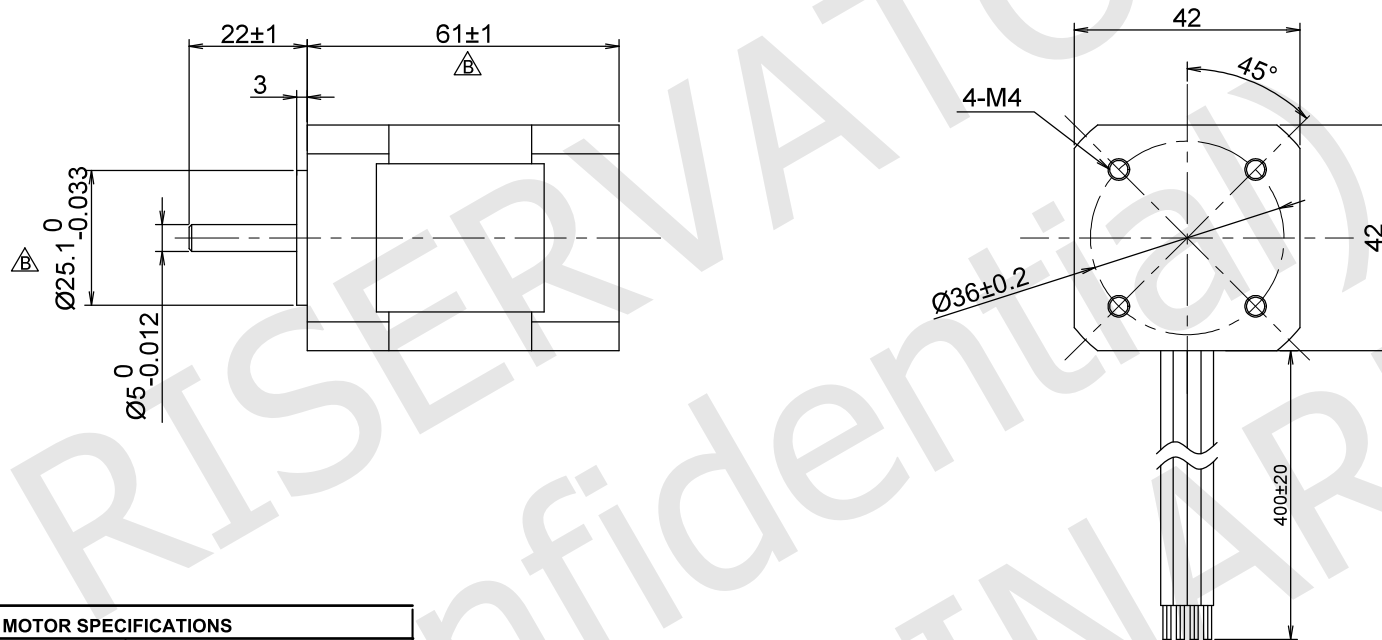
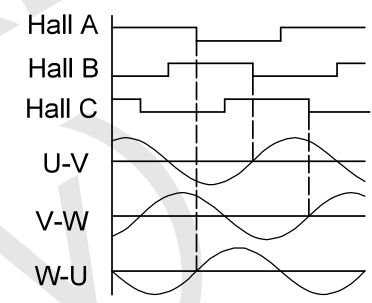


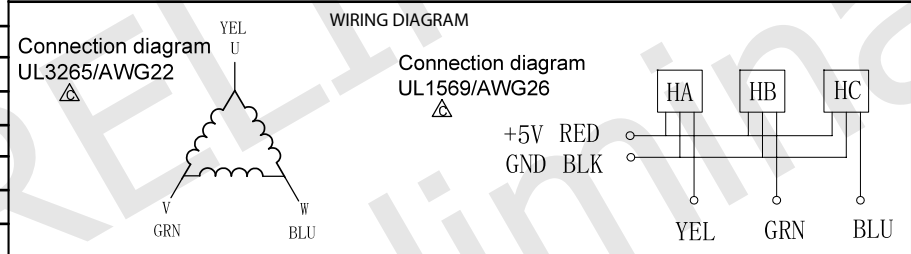
RoHS



CW FROM THE FRONT SHAFT



MOTOR SPECIFICATIONS	
RATED VOLTAGE	48 Vdc
POLES	8
PHASES	3
RATED CURRENT	1.50 A
PEAK CURRENT	4.50 A
RATED POWER	60 W
RATED TORQUE	0.13 Nm
PEAK TORQUE	0.39 Nm
RATED SPEED	4400 rpm ±10%
NO LOAD SPEED	6000 rpm ±10%
INSULATION CLASS	Class B, 130°C
IP CODE	IP40
LINE TO LINE RESISTANCE	3.00 ohm ±10%
LINE TO LINE INDUCTANCE	1.75 mH ±20%
ROTOR INERTIA	48 g.cm ²
BACK EMF CONSTANT	4.50 Vrms/Krpm
TORQUE CONSTANT	0.087 Nm/A
OPERATING TEMPERATURE	-20°C ~ +55°C
STORAGE TEMPERATURE	---
WEIGHT	500 g. approx
MAX SHAFT AXIAL LOAD	---
MAX SHAFT RADIAL LOAD	---



LABELS

(40)

YYWWXXXXX (25 x 8)

Stator barcode label

UNIT: mm	DESIGN	Stm02306-00c
UNLESS OTHERWISE SPECIFIED TOLERANCES	CHECK	
DIMENSIONS : ±0.3 mm DEGREES : ±5%	APPROVED	
DRAWING NOT TO SCALE	DATE	06 / 02 / 2023

MT17HB4H060M300
DC BRUSHLESS MOTOR SPECIFICATION

REV	00a - First release.
	00b - Modify some motor parameters.
	00c - Add some specs as the real motor.