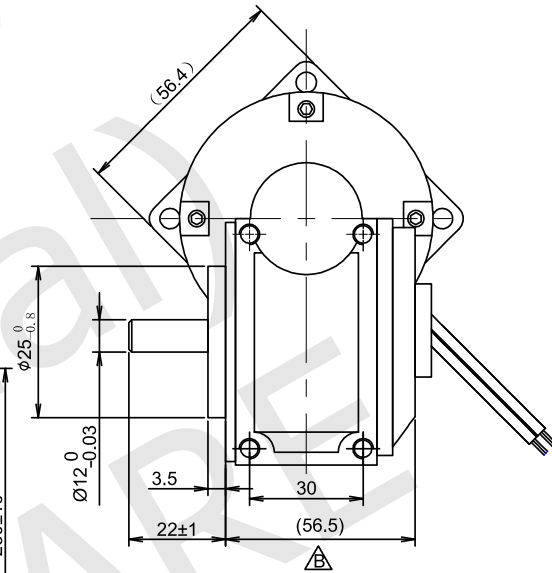
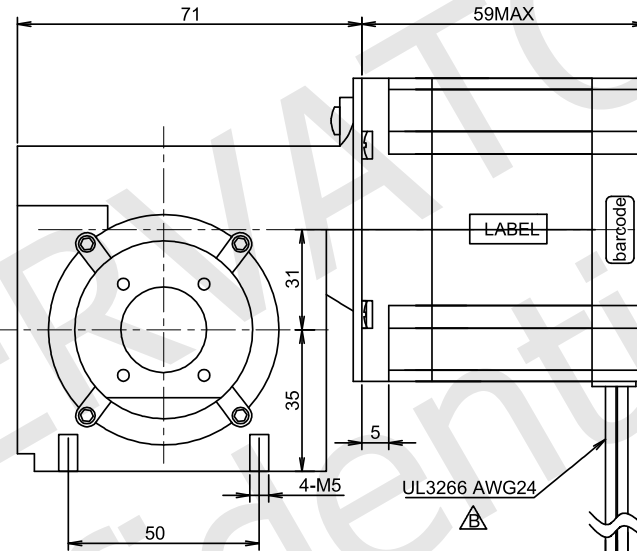
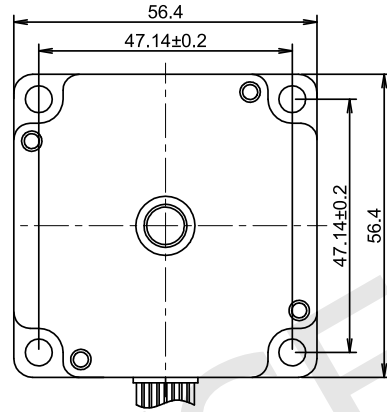


RoHS



GEARBOX SPECIFICATIONS

Gearbox type	Reducer worm at 90° output
Gearbox ratio	1:10

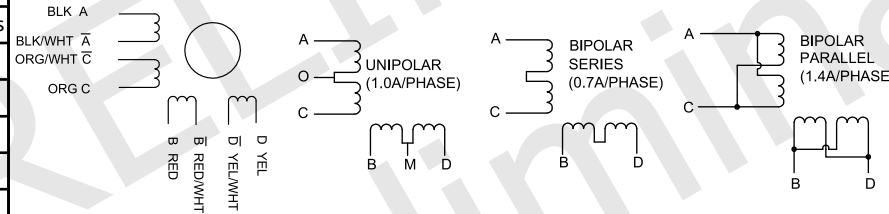
MOTOR SPECIFICATIONS

STEP ANGLE	1.8° ±5%
RATED CURRENT	1.00 Amps/Ph
HOLDING TORQUE	1.10 Nm Min.

CONNECTION MODE	RESISTANCE (ohm)	INDUCTANCE (mH)	RATED CURRENT (A)	HOLDING TORQUE N.m
UNIPOLAR	5.8	7.5	1.0	0.8
SERIES BIPOAR	11.6	30	0.7	1.1
PARALLEL BIPOLAR	2.9	7.5	1.4	1.1

RESISTANCE	5.80 ohm ±10% at 25°C
INDUCTANCE	7.50 mH ±20% at 1kHz, 1Vrms
ROTOR INERTIA	280 g.cm ²
INSULATION CLASS	Class B, 130°C
DIELECTRIC STRENGTH	500 Vac 1 minute
IP CODE	IP20
PULL OUT TORQUE	---

WIRING DIAGRAM



LABELS

(15)

(40)

YYWWXXXXX (25 x 8)
Stator barcode label

BACK EMF	---
DETENT TORQUE	---
WEIGHT	1140 g. approx
TEMPERATURE RISE	80K Max.
OPERATING TEMPERATURE	-20°C ~ +50°C
STORAGE TEMPERATURE	-20°C ~ +70°C
SHAFT AXIAL LOAD	15 N
SHAFT RADIAL LOAD	75 N (ON FRONT SHAFT END)

UNIT: mm	DESIGN	Stm01318-01c
UNLESS OTHERWISE SPECIFIED TOLERANCES	CHECK	
DIMENSIONS : ±0.3 mm DEGREES : ±5%	APPROVED	
DRAWING NOT TO SCALE	DATE	16 / 04 / 2021

REV

01a - First release.
01b - Correct the gearbox dimension.
01c - Modify the leadwires type.

MT23FK22010M8G3
STEPPING MOTOR SPECIFICATION



www.everelettronica.it